

## Total support at your fingertips

Pilots are attracted to our GPS portables for any number of valid reasons: Innovative designs. Quality construction. Useful features. Smart technology. Compact size. Value pricing. Simple operation.

But, in the end, it's the total support we put behind every product in our lineup that turns first-time Garmin buyers into loyal, long-term Garmin customers.

We want you to have a great user experience with any and every Garmin product you select:

- ▶ That's why every Garmin product is warranted to be free from defects in materials or workmanship for one full year from your date of purchase.
- ▶ That's why you'll find over 700 authorized service centers standing by to support our aviation customers in virtually every corner of the globe.
- ▶ And that's why Garmin attracts and hires some of the industry's brightest technical minds to serve in our factory support positions. They're also pilots who speak aviation. And their troubleshooting expertise is available by phone, fax or online — whenever you have a question or service issue that demands the right answer, right now!

No other manufacturer does more to put total navigation confidence at your fingertips.

To see for yourself, we invite you to call or visit one of the nearby Garmin avionics centers in your area.

### Garmin International, Inc.

1200 East 151st Street, Olathe, KS 66062  
p: 866.739.5687 f: 913.397.8282

Garmin (Europe) Ltd.,  
Liberty House, Hounslow Business Park,  
Southampton, Hampshire, SO40 9LR, U.K.  
p: +44 (0)87.0850.1243 f: +44 (0)23.8052.4004

Garmin Singapore Pte. Ltd.,  
46 East Coast Road #05-06, Singapore 428766  
p: 65.63480378  
f: 65.63480278  
e: avionics.asia@garmin.com

©2015 Garmin Ltd. Or its subsidiaries  
Price, features and specifications subject to change without notice.  
The Bluetooth work mark and logos are registered trademarks owned by Bluetooth SIG, Inc. and any use of such marks by Garmin is under license.

0715 M02-10114-00



## The fast-evolving world of portable GPS.

It wasn't so very long ago that the words "aviation portable" could be used to categorize, fairly concisely, a segment of standalone GPS handheld products. But nowadays, with the emergence of sophisticated navigation, mapping and digital flight bag apps for iPads™, smartphones and other tablet-type computer devices, the very idea of what constitutes a "portable product" for aviation has taken on a whole new range of meanings.

What's more, the industry's accelerating move toward satellite-based air traffic control in the NextGen airspace system has brought with it an array of new cockpit connectivity options — including subscription-free U.S. weather, NEXRAD imagery and ADS-B traffic monitoring services — which can all now easily be accessed via portable, pocket-sized datalink receivers that pilots can carry with them into any aircraft they fly. Moreover, a number of these products now include their own wireless local link capabilities (via our Garmin Connex™ technology), which enable them to remotely connect, control, activate and/or "talk with each other" in ways that promise even greater things to come.

In other words, it's a new world out there.



But, rest assured, it's a world where Garmin innovation continues to set the pace. Over the past quarter-century, we've been steadily building our brand with the kind of performance, value and first-in-class features that make GPS-based navigation truly portable and affordable for everyone who flies.

Designed for pilots by pilots, our portable solutions are known for their reliability, durability, practicality, safety and simplicity of operation — no matter what hardware and/or software configuration they might take. They've all been tested and optimized for use in demanding cockpit environments. And they're backed by the most highly acclaimed service/support network in the aviation industry. No wonder pilots around the globe look to Garmin as their go-to source for today's best in portable flight technology.

table of contents	Garmin Connex™	4
	Garmin Pilot® app	6
	D2™ Series Pilot Watches	7
	VIRB® XE Action Cam	8
	VIRB Elite™ Action Cam	8
	GDL 39 3D ADS-B	9
	aera® 796/795	10
	GPSMAP® 696/695	12
	aera® 500 series	14
	Garmin GLO®	15
Database updates	15	
Total Support	16	





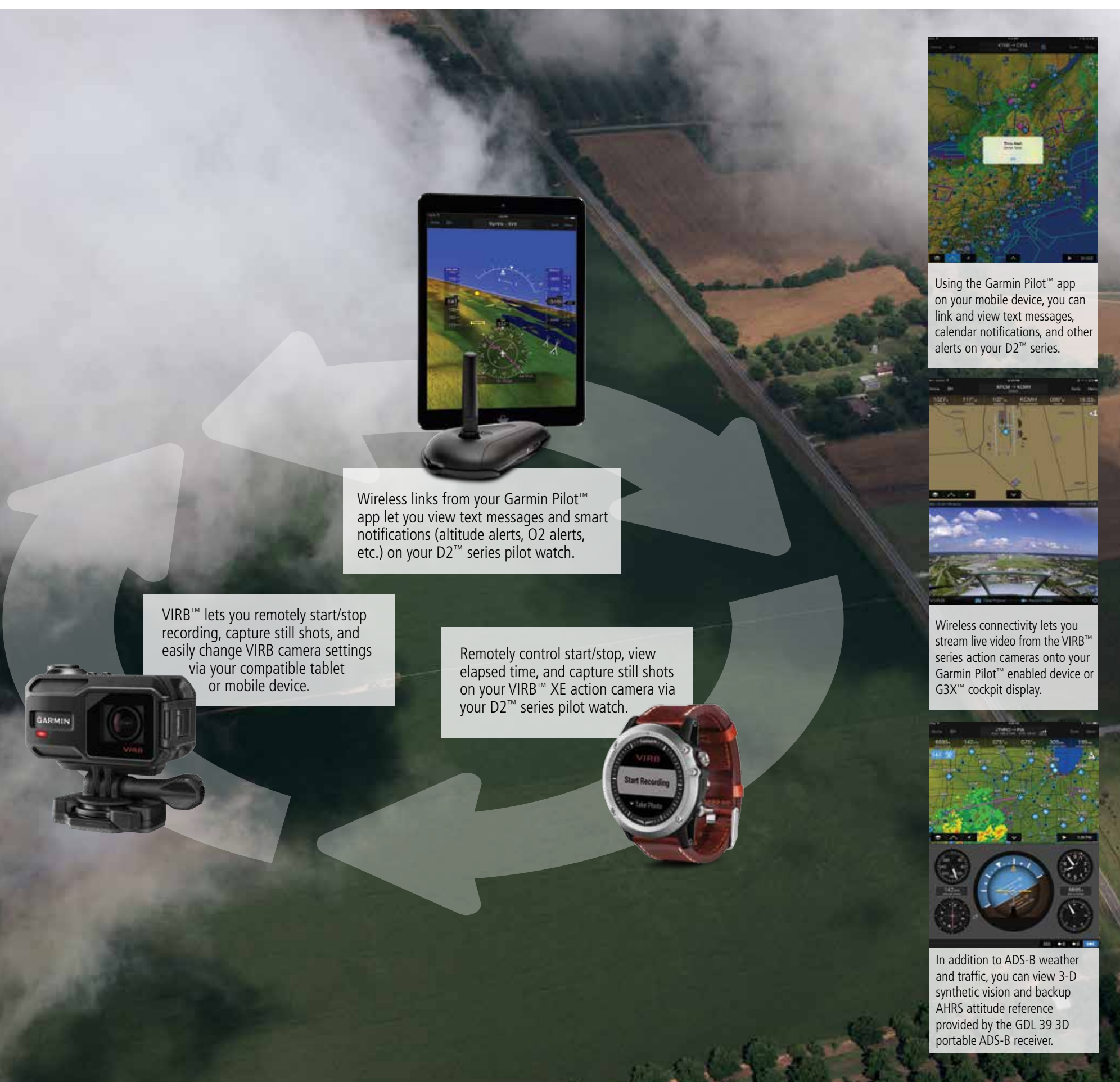
## Portability meets connectivity. With Garmin Connex™.

Whether it's a datalink that brings weather and traffic information from a nationwide ADS-B network, or a localized Bluetooth®/wireless connection between individual devices, wireless technology is revolutionizing how pilots use and connect with their portable devices in the cockpit. Garmin's flight data connection services (known collectively as Garmin Connex™) provide the means to wirelessly link people, devices and information – on the ground and in the air.

For example, you can use Connex – via one of the Garmin Flight Stream series of cockpit-mounted transceivers – to stream information in real time between your Apple iPad® (or other compatible mobile device) and your avionics. Using our Garmin Pilot™ app, it's easy to preload flight plan data onto your tablet or smart device, whenever and wherever it's convenient. Then, once you're ready to go to the airport, use Connex to wirelessly upload the data – waypoints, airway routings and all – into your plane's GTN™ or GNS series avionics during preflight. It's fast. It's easy. It's seamless. And, even better, keeping flight plans in sync between your device and your avionics is a cinch: You enter the data on one device, and with a tap or two, your entries are automatically transferred to the other. So, there's no duplication of effort on your part when it comes to keeping everything in sync. Moreover, by streaming data from your avionics to your iPad, you can also integrate the tablet's map and flight displays with graphical weather, traffic, GPS position reference, and AHRS input for backup attitude reference and 3-D synthetic vision displays – virtually turning your mobile device into a touchscreen flight display.

As you can see, today's aviation world is becoming a far more interactive, information-driven environment than ever before. Which is why you'll be seeing more and more Garmin portable products with Connex capability built right in – allowing wireless access, control and sharing of information between multiple devices. In addition to the flight planning and navigation functions, other Connex-enabled features include the ability to use your mobile device – or even your Garmin D2™ series pilot watch – to remotely control your Garmin VIRB® XE or Elite model aviation action camera (or several of them), which you can mount to record live video footage or still photography from your aircraft. Then, using Connex, you can also stream and integrate live VIRB video using the Garmin Pilot™ app on your iPad®.

In so many ways, both large and small, the links made possible by Garmin Connex are already redefining how pilots view, control and access all their electronic connections in the cockpit.





# Clear your tablet for takeoff. With our Garmin Pilot® app.

Now, you can turn a whole array of iOS® and Android-based mobile devices (including Apple's iPad®, iPhone® and iPod Touch®, as well as other popular smartphones and tablets) into some of the most versatile piloting tools you've ever slipped into a flight bag. Global in its scope and coverage, the Garmin Pilot™ app features detail-rich interactive mapping and charts, advanced MFD-like navigation capabilities, complete flight planning, DUAT(S) filing, airport directory and weather briefing resources – plus available inflight weather and traffic display links¹.

The app's easy-to-use menu icons mirror those of the newest Garmin touchscreen avionics – with a graphic interface that allows you to quickly pan across the display and “pinch zoom” to scale the map view up or down. Using your unit's internal (or compatible external) GPS reference, Garmin Pilot provides full enroute navigation on its moving map display, while keeping track of your ETE, ETA, crosstrack error, distance to waypoint and more. Also, the exclusive NavTrack feature lets you “look ahead” to preview changing weather conditions along your route, while connected to the internet. VFR sectional or IFR enroute charts can be selected for navigation. Plus, you can upgrade the standard Garmin FliteCharts® with optional geo-referencing capability – and optional SafeTaxi® diagrams as well – to track your aircraft's position on approach, landing and taxi from runway to ramp.

Global terrain data, as well as U.S., Canadian and European obstacle alerting and detail-rich surface mapping with Visual Reporting Points

(VRPs), are also available within Garmin Pilot®. Plus, in addition to U.S. charts, IFR and VFR aeronautical chart coverage is now available for Europe and Canada, providing valuable information such as radio frequencies, airspace boundaries, landmark information, and so on. As an option, Garmin Pilot® is also available with mapping formats and global navigation data powered by Jeppesen™.

To further extend your tablet's capability, you can wirelessly link – via Garmin Connex™ – to a portable Garmin GDL 39 3D ADS-B receiver. That connection not only lets you access subscription-free weather and uplinked ADS-B traffic, but it also adds reliable AHRS backup attitude reference to enable 3-D synthetic vision with virtual terrain, horizon cues, HSI, airspeed, altitude and vertical speed reference all integrated on the flight display². Along with this, the datalinked traffic is enhanced with our exclusive TargetTrend™ relative motion tracking technology to help you better visualize traffic trajectories and closing rates in relation to your flight path. And once you've landed, Garmin TerminalTraffic™ technology also enables ADS-B equipped surface targets to be displayed on the SafeTaxi® diagram, so you can see what's happening, traffic-wise, on busy runways and taxiways. Better still, at the end of your flight, there's even a handy Logbook feature in Garmin Pilot that will automatically capture and record your total flight time from takeoff to landing – as well as day/night recency for FAR requirements. This feature also provides a place for logbook endorsements, and it even syncs in the cloud with flyGarmin to keep all your flight entries up-to-date.



The exclusive NavTrack feature on the display lets you “look ahead” to preview changing weather conditions along your route of flight.



Optional SafeTaxi® diagrams with geo-referencing capability help you navigate on unfamiliar airports. With an optional GDL 39 receiver, TerminalTraffic™ technology displays ADS-B equipped surface targets right on these diagrams.



A terrain and obstacle database provides high-resolution contour mapping to show your aircraft's proximity to potentially hazardous terrain or obstacles like towers, as well as provide audible and visual cautions and warnings as you near these obstructions.



With an optional GDL 39 or 39 3D ADS-B receiver, Garmin Pilot can display subscription-free weather and datalink traffic. Traffic displays with our patent-pending TargetTrend™ technology that shows traffic trajectories relative to your aircraft.

# GPS navigation at your fingertips. From the timepiece on your wrist.

The Garmin D2™ family of pilot watches was the first to put true global navigation capability right on your wrist – for the ultimate in portability and situational awareness. Featuring a worldwide airport database that enables Garmin's signature Direct-To and Nearest navigation functions, these versatile devices also incorporate a built-in altimeter with adjustable baro setting, altitude alerting capabilities, display of both local and Zulu/UTC time, various timers and alerts, internal compass with HSI, and the ability to seamlessly integrate with the Garmin Pilot™ app, VIRB™ action cameras, and more.

By pressing and holding dedicated buttons on your D2 series watch, you can quickly access the Direct-To and Nearest functions, as well as create mark-on-target waypoints of your current location on the map.



D2™ Bravo



Additionally, the higher-end D2™ Bravo model will work wirelessly with your compatible smartphone to bring you a screenful of current meteorological (METARs) information: Winds, visibility, precipitation, cloud cover and heights, temperature, dew point, barometric pressure, and so on – all the vital, at-a-glance updates you need for smart pre-flight decision making. This model also features a crisp color display, a scratch-resistant sapphire lens, premium leather watch band, and smartphone connectivity to display alerts, text messages and calendar notifications. You can also assign customized data fields to display GPS groundspeed, GPS track, distance, estimated time enroute, bearing, glide ratio, and other useful flight parameters. And a handy altitude alerting feature can be set to notify you when reaching or leaving a preselected altitude, so you'll know when it's time to level off or return to an assigned altitude. Other vibrating alerts can be set to remind you when it's time to switch fuel tanks or perform other time-critical tasks. And the baro-based O2 Altitude alert feature will automatically notify you when you've reached an altitude where supplemental oxygen is required. What's more, when wirelessly connected to the Garmin VIRB™ series of HD action cameras via Garmin Connex™, all D2 model watches have the ability to remotely start/stop video, view elapsed time for active recording, and even capture high-quality still photos – while live video is being recorded. Garmin D2 series: It's what the world's most confident navigators are proud to have up their sleeves.



D2™

## Specifications

<b>Receiver:</b>	High-sensitivity GPS
<b>Waypoints:</b>	1000
<b>Routes:</b>	50
<b>Basemap:</b>	Worldwide, preloaded
<b>Interface:</b>	USB
<b>Battery type:</b>	Rechargeable Li-ion
<b>Battery life:</b>	D2 Bravo – up to 20 hours in GPS flight mode; up to 6 weeks in watch mode. D2 – up to 2 weeks in sensor mode; up to 5 weeks in watch mode.
<b>Unit Size:</b>	D2 Bravo – 2.0"W x 2.0"H x 0.6"D D2 – 1.9"W x 1.9"H x 0.7"D
<b>Display size:</b>	1.2" diameter (3.1 cm)
<b>Weight:</b>	2.98 oz (.084 kg) with battery

¹Requires supported receivers using Wi-Fi connectivity  
²In addition to AHRS attitude, the GDL 39 3D also provides built-in GPS positioning reference



# Capture video on the fly. Direct from your cockpit.

VIRB® is the word for pilots who want to record and enjoy their aerial adventures, hands-free. With our VIRB® series HD aviation action cameras and their bundled accessories, you're all set to capture flight footage – even those horizon-flipping aerobatic maneuvers – right out of the box. And video enhancement features like digital image stabilization, automatic distortion correction, prop filter, and optional wireless remote control ensure that footage recorded with your VIRB will look great, even before editing.

Our premium model, the VIRB XE, features exclusive G-Metrix™ performance data sensing and overlay capability to graphically display relevant parameters such as location, speed, altitude, direction, G-forces, etc., right on your video. Built-in Garmin GPS, G-force and orientation sensors, plus the ability



VIRB XE



to wirelessly connect with external sensors, let you track your flight data in real-time and display it all in compelling on-screen gauges, graphs and more. Better still, you can also use the VIRB's wireless Bluetooth® connectivity with compatible audio panels (such as the Garmin GMA 350c) to capture ATC radio calls and cabin audio communications on your video soundtrack. With its enhanced recording capabilities, VIRB XE can shoot professional HD footage at 1080p/60fps, with 240 fps HD slow-mo, wide-angle and zoom options. Plus, for quick, easy sharing of your videos, the VIRB app on your compatible tablet or smartphone can be used to instantly playback, edit and share your recorded footage on the go.

In addition to high-quality video footage, your VIRB XE can also take ultra-sharp still photos with photo burst and time lapse options. It can even capture still shots while you're recording video. With the camera's Pro Mode you can also access advanced manual camera adjustments such as white balance control, sharpness control, color profile control, ISO limit and exposure bias. Moreover, built-in WiFi/ANT connectivity via Garmin Connex™ allows you to remotely start/stop recording, capture still shots, view elapsed time and other functions, right from your D2™ series pilot watch, G3X™ Touch display, or Garmin Pilot™ equipped smart device. You can also use this wireless connectivity to sync and control several connected VIRB devices from a single master unit to simplify the editing process later.

## Specifications

<b>Image Sensor:</b>	12.4 megapixel, 1/2.3-inch CMOS
<b>File type:</b>	.mp4
<b>HD Video:</b>	1080p HD video: 60, 50, 48, 30, 25, 24 fps
<b>Interfaces:</b>	USB 2.0, micro HDMI, ANT+, Wi-Fi
<b>Battery type:</b>	Removable Li-ion
<b>Battery life:</b>	Up to 2 hours (nominal) at 1080p, 30 fps
<b>Unit Size:</b>	3.0"W x 1.6"H x 1.4"D
<b>Display size:</b>	1.0" diagonal (2.54 cm)
<b>Weight:</b>	5.35 oz (.15 kg) with battery

**Bundle up.** With the VIRB® XE Aviation Bundle, Garmin includes virtually everything you need to get started: camera, suction cup mount, SD card, headset audio cable, prop filter, the works.

# Fly with weather, traffic and GPS. While watching your attitude.

Now, with this compact portable antenna/receiver in your aircraft, you can take full advantage of the FAA's subscription-free U.S. weather and traffic services available through the ADS-B (Automatic Dependent Surveillance – Broadcast) uplink network.<sup>1</sup> And, better still, you can add simultaneous display of backup attitude sensor reference (pitch and roll), along with detailed moving-map navigation and WAAS-level satellite positioning accuracy from the unit's built-in GPS.

With the Garmin GDL 39 3D ADS-B "In" datalink, you have access to a whole new level of "glass cockpit" type flight information. Using the Garmin Pilot™ app, you can view all this data on your Apple iPad® or other compatible iOS® or Android® devices<sup>2</sup>. And you can even split the display on your iPad® screen to show traffic and weather overlaid on the moving map above, while monitoring your backup AHRS attitude on Garmin's Panel Page instrument display below. It's like having a virtual flight deck you can pack in your flight bag. Similarly, if you own an aera 796/795, aera 500 series, or GPSMAP 696/695, the GDL 39 3D receiver's weather and traffic uplinks are also compatible with these products. In addition, the 795/795 will also display 3D Vision with AHRS attitude display cues provided by the GDL 39 3D.

The ADS-B weather link is continuously broadcast on the 978 MHz Universal Access Transceiver (UAT) frequency, and is similar to the basic services offered by leading commercial satellite weather providers. For example, you can access NEXRAD imagery, METARs, TAFs, winds and temperatures aloft, PIREPs, NOTAMs, and more<sup>3</sup>. Along with this, you can also receive ADS-B traffic position reports (and threat-level symbology) to help you see-and-avoid converging targets in busy airspace. Spoken audio alerts call out potential flight path conflicts ("Traffic, traffic.") to get you looking right away. Meanwhile, on your screen, Garmin's patent-pending TargetTrend™ relative motion display<sup>4</sup> offers a faster, more intuitive way of judging target trajectories and closure rates in relation to your flight path. As an added safety feature, Garmin TerminalTraffic™ technology supports the display of ADS-B equipped surface targets on the map screen, to help you keep track of other aircraft or ground vehicles that may be moving in your vicinity on the airport. The GDL 39 3D is, by far, one of the simplest and smartest ways to gain the benefits of ADS-B technology. It's a dual-link system. So, it can receive on both ADS-B frequencies (978 MHz and 1090 MHz) authorized for ADS-B operations in the U.S. However, for best traffic uplink results, your aircraft needs to be a "participant" in the ADS-B system and have an approved ADS-B "Out" system (such as a 1090 MHz Extended Squitter transponder) onboard. The GDL 39 3D does not provide this "Out" function, but it can serve as an affordable "In" receiver to access the benefits of ADS-B weather and traffic data, subscription-free.



## Specifications

<b>Receiver:</b>	Dual-channel ADS-B (978 MHz UAT/1090MHz)
<b>Operating temp:</b>	-20°C to +60°C (-4°F to 140°F)
<b>Operating altitude:</b>	To 55,000 ft.
<b>Power input:</b>	10 to 32 VDC; 3.5 W max.
<b>Battery type:</b>	Rechargeable Li-ion (optional)
<b>Battery life:</b>	Up to 4 hours (nominal)
<b>Unit Size:</b>	3.5"W x 1.9"H x 6.0"D
<b>Weight:</b>	0.48 lb (.22 kg)

<sup>1</sup>Note: The GDL 39 3D is a non-certified receive-only product. It does not provide ADS-B "Out" capability to satisfy FAA mandate requirements.  
<sup>2</sup>See Garmin website or dealer for our growing list of compatible devices.  
<sup>3</sup>Note: Not all FIS-B weather products may be available on all Garmin displays. Please check your Pilot's Guide for the specifics on your product.  
<sup>4</sup>Both the audible traffic alerting feature and TargetTrend™ require compatible displays. Please check your Pilot's Guide for specific capabilities available on your display.

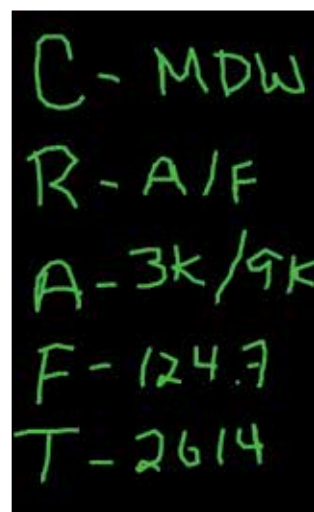




## The aera® of large-format touchscreens has arrived.

Ever think you'd see so much "big picture" perspective from a GPS portable? Say hello to the Garmin aera® 796. It's bringing touchscreen control and unique 3D Vision flight terrain imagery with AHRS attitude display cues to those pilots who want the very best in carry-on navigation. Providing a computer-generated "virtual reality" picture of ground and water features, airports, towers, obstacles, enroute legs and more, the aera's 3D flight graphics offer a detailed simulation of the flightscape beneath your aircraft. And with the flick of a finger, you can rotate the 3D view completely around the aircraft for easy scanning of your surroundings from various "camera-ship" vantage points. The aera 796's screen orientation – from vertical portrait view to

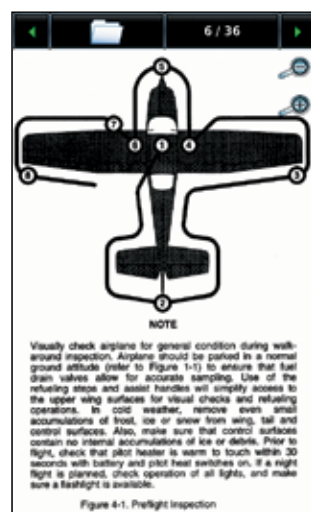
horizontal landscape format – is pilot-selectable. And initial Garmin IFR FliteCharts®, AeroNav IFR Enroute and VFR Sectional charts, SafeTaxi® diagrams, and AOPA Airport Directory data all come pre-installed on the system<sup>1</sup>, along with database-driven terrain and obstacle alerting. (A worldwide AC-U-KWIK airport directory and IFR/VFR sectional charts for Europe and Canada are also optionally available.) Plus, you can easily connect a Garmin GDL 39 3D ADS-B "In" datalink receiver to display traffic targets, weather and more. The aera's big 7-inch capacitive touchscreen lets you view an entire approach plate at a glance. High and low altitude airways can be navigated on the MFD moving map. And now, both the standard Garmin FliteCharts® and the



Convenient "scratch pad" for writing down clearances and other notes



Optional SiriusXM™ weather can overlay on moving map<sup>3</sup>



PDF document viewer offers easy access to aircraft flight manual data



Your choice of standard AOPA Airport Directory for the U.S. or optional worldwide AC-U-KWIK directory provides access to facility and fuel price information on thousands of locations.



For pilots flying in Europe, detailed VFR and IFR aeronautical charts from DFS are optionally available



VFR Sectional chart data with geo-referencing is included for the U.S.

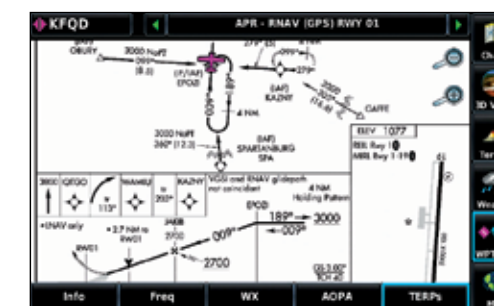


optionally available ChartView® Jeppesen-format instrument approach plates<sup>2</sup> feature geo-referencing capability – with an overlaid aircraft symbol that displays your aircraft's exact position in relation to most instrument approaches. (It's worth noting that VFR Approach procedures for Europe are also available from Jeppesen.) A built-in document viewer expands the aera 796's utility as an electronic flight bag (EFB) by enabling you to load and view PDF documents, JPEG photos, and other electronically formatted materials of all kinds – everything from basic checklists and charts to detailed performance/procedural data from the aircraft flight manual. There's also a handy scratchpad for writing down clearances or other important notes. For urban aviators, such as helicopter pilots, who sometimes need to navigate to specific ground

locations or addresses, the addition of an optional City Navigator® map allows the user to search and locate any desired surface address for use as a flight plan waypoint or for "direct-to" aerial navigation. In addition to the aforementioned GDL 39 3D ADS-B datalink option for weather, another choice is provided by the optional GXM 42 Smart Antenna for SiriusXM™ satellite coverage. Powered through the aera 796, the GXM 42 provides North American customers with access to datalinked NEXRAD imagery, METARS and other flight-useful weather capabilities – plus some 170+ channels of digital audio programming<sup>3</sup> through SiriusXM™ satellite radio. For those in areas beyond the reach of this satellite coverage, Garmin's aera® 795 model offers the same overall function-ality as the 796, without the built-in SiriusXM interface.



Optional European VFR terminal approach charts are available on the aera 796/795, with coverage for over 2,200 airports in 29 countries



Geo-referenced U.S. FliteCharts® come pre-loaded, along with SafeTaxi® diagrams for thousands of U.S. airports.

### Specifications

<b>Receiver:</b>	WAAS-enabled, 12 channel, high-sensitivity
<b>Waypoints:</b>	3000
<b>Routes:</b>	50 with up to 300 points each
<b>Basemap:</b>	Americas, Atlantic or Pacific
<b>Uploadable maps:</b>	Supports optional detailed maps
<b>Battery life:</b>	3 - 8 hours of use (nominal)
<b>Size:</b>	5.1"W x 8.0"H x 1.5"D
<b>Display size:</b>	7.0" diagonal (17.78 cm)
<b>Weight:</b>	1.65 lb (.75 kg) with battery

<sup>1</sup>Initial Garmin FliteCharts® and SafeTaxi® are available for the U.S., Canada and Europe. VFR Sectional charts and AOPA Directory are for U.S. only.  
<sup>2</sup>JeppView subscription required (sold separately).  
<sup>3</sup>SiriusXM subscription required (sold separately) for use with aera 796. See XM WX for coverage areas and subscription plans.



# Turn your flight bag into a portable command center.

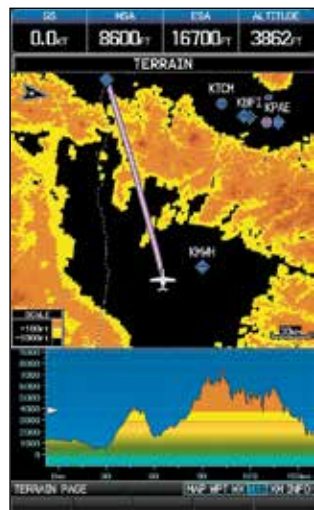
Bridging the gap between flight deck and flight bag, Garmin's robust GPSMAP® 696 is the large-format GPS portable that works like a moving-map MFD. Its big 7-inch diagonal high-resolution display makes it easy to visualize your aircraft's current position in relation to terrain features, airports, special use airspace, and so on. The sectional-like mapping is overlaid by an arc-view navigation reference showing course, speed and distance information. Plus, terrain and obstacle alerts let you know when potential flight hazards loom ahead. You can also connect the GPSMAP 696 to a Garmin portable GDL 39 3D ADS-B "In" receiver for display of traffic alerts, weather and more. For help with enroute IFR, the GPSMAP 696 can display Victor airways and Jet routes. What's more, preloaded Garmin

FlightCharts® provide an electronic version of all the approach plates and terminal procedures currently published by AeroNav Services<sup>1</sup> for the U.S., plus thousands more for Canada and Europe. AeroNav IFR Enroute and VFR Sectional charts, SafeTaxi® diagrams, and AOPA Airport Directory data all come pre-installed on the system<sup>1</sup>, along with database-driven terrain and obstacle alerting. (A worldwide AC-U-KWIK airport directory and IFR/VFR DFS charts for Europe are also optionally available.) To make tracking your position even easier, the standard Garmin FliteCharts® (as well as the optionally available ChartView® format<sup>2</sup>) feature geo-referencing capability — with an overlaid aircraft symbol that displays your aircraft's exact position in relation to most instrument approaches. Plus, once you've landed, the

696's preloaded SafeTaxi® charts are there to help you find the right taxiway to your hangar or ramp. In addition to the GDL 39 3D ADS-B datalink option mentioned earlier, another choice for NEXRAD imagery and weather information is provided by the optional GXM 42 Smart Antenna — which offers SiriusXM™ satellite coverage across North America. As a bonus, this antenna can also be used to access and enjoy over 170 channels of digital-quality music, news and programming via SiriusXM™ satellite radio, all streamed through your aircraft headset or cabin audio system<sup>3</sup>. Alternatively, if most of your flight operations take place outside the SiriusXM coverage area, Garmin's GPSMAP® 695 model offers similar functionality to the 696, without the built-in SiriusXM weather/entertainment capabilities.

## Specifications

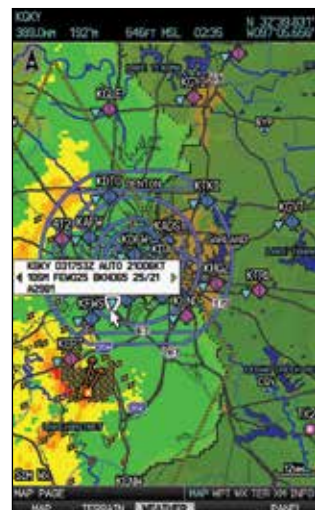
<b>Receiver:</b>	WAAS-enabled, 12 channel, high-sensitivity
<b>Waypoints:</b>	3000
<b>Routes:</b>	50 with up to 300 points each
<b>Basemap:</b>	Americas, Atlantic or Pacific



Terrain page offers overhead and vertical profile views



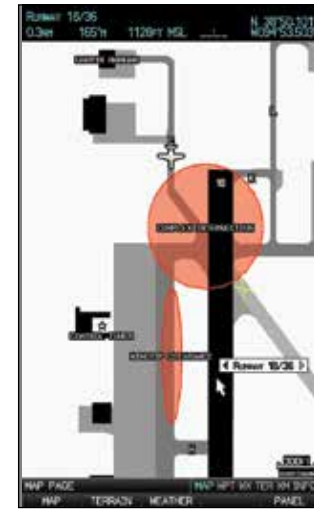
SiriusXM™ Radio support lets you enjoy 170+ audio channels<sup>1</sup>



Available SiriusXM satellite weather data includes potential icing forecasts<sup>1</sup>



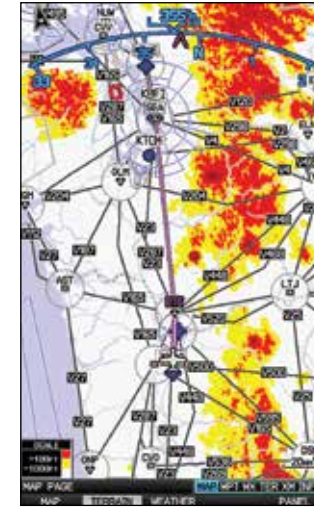
AOPA Airport Directory provides data on thousands of U.S. airports (worldwide AC-U-KWIK directory is optionally available)



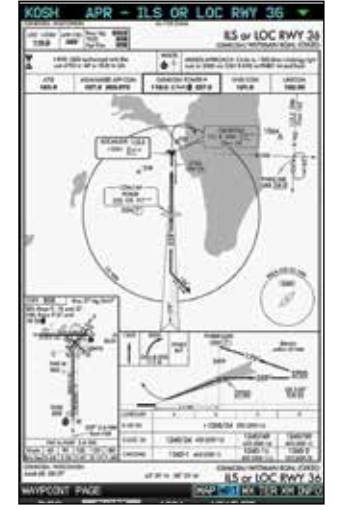
Preloaded SafeTaxi® offers diagrams for airports throughout the U.S., Canada and Europe



Split-screen combines map with GPS panel display



IFR map mode shows high and low enroute airways with selectable terrain overlay



Geo-referenced U.S. FliteCharts come preloaded

<sup>1</sup>Initial Garmin FlightCharts® and SafeTaxi® are available for the U.S., Canada and Europe. VFR Sectional charts and AOPA Directory are for U.S. only.  
<sup>2</sup>JeppView subscription required (sold separately).  
<sup>3</sup>SiriusXM subscription required (sold separately). XM coverage area is limited to continental U.S. only.

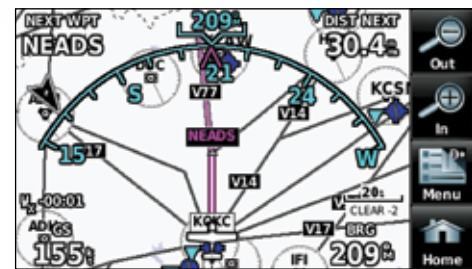


# Touchscreen navigation meets fly/drive versatility

Leveraging Garmin's industry-leading expertise in both Aviation and Automotive GPS, the versatile aera® 500 series portables let users transition seamlessly from runways to roadways — with easy touchscreen command. Four aera models offer a full range of cost/capability choices — two of which support Sirius XM™ satellite weather and entertainment options<sup>1</sup>; and all of which can connect to the GDL 39 3D portable receiver for display of subscription-free ADS-B traffic, weather and more. In pilot mode, detailed flight mapping, terrain advisories, and our patented Panel page are featured. Plus, U.S. Canadian and European SafeTaxi® charts are included on the aera 550/560 models, along with AOPA Airport Directory information. (A worldwide AC-U-KWIK directory is also optionally available.) Other premium features on the aera 550/560 include higher-resolution terrain/obstacle detail (providing over 11 times more onscreen resolution than the standard terrain display on the aera 500/510). Then, after your aircraft is parked or hangared, your journey continues with preloaded City Navigator® NT street mapping<sup>2</sup> and turn-by-turn car navigation featuring text-to-speech audio technology that calls out streets by name. Premium models even add lane assist, traffic alerts<sup>3</sup> and more. Garmin aera series: It's the ultimate fly/drive option.



Product/Features:	XM Capable	Standard features	Premium features
aera 500	No	Yes	No
aera 510	Yes	Yes	No
aera 550	No	Yes	Yes
aera 560	Yes	Yes	Yes



IFR map mode shows high and low enroute airways



Preloaded SafeTaxi® diagrams with "hot spots" are available only on aera 550/560 models



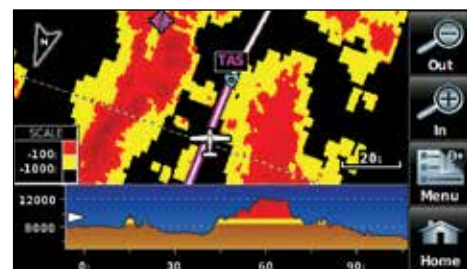
Fast 5 Hz update rate provides smoother, more responsive readouts on GPS-derived "Panel" page



AOPA Airport Directory (on aera 550/560) details 7,400+ U.S. airports



Available XM weather<sup>1</sup> can overlay moving map on aera 510 and 560 XM Radio support on aera 510 and 560 lets you enjoy 170+ audio channels<sup>1</sup>



Terrain page offers overhead and vertical profile views. Shown with high-resolution terrain on the aera 550/560.

## Specifications

<b>Receiver:</b>	WAAS-enabled, 12 channel, high-sensitivity
<b>Waypoints:</b>	3000
<b>Routes:</b>	50 with up to 300 points each
<b>Basemap:</b>	Americas, Atlantic or Pacific
<b>Uploadable maps:</b>	Supports optional detailed maps
<b>Battery life:</b>	Up to 5 hours (nominal) based on backlight
<b>Size:</b>	5.3"W x 3.3"H x 0.9"D
<b>Display size:</b>	4.3" diagonal (10.9 cm)
<b>Weight:</b>	9.5 oz (270 g)



Preloaded City Navigator® NT mapping makes street navigation easy. Shown with available junction view on aera 550/560 models.



Graphical menus and easy-to-access "home" screen help simplify operation

<sup>1</sup>NOTE: Subscriptions are required for optional SiriusXM weather and audio entertainment packages (sold separately).  
<sup>2</sup>North American coverage includes the U.S., Canada and Puerto Rico, as well as the Cayman Islands and the Bahamas. Mexico coverage is not included.  
<sup>3</sup>Navteq traffic alerts require an external TMC receiver (sold separately).

# Garmin GLO®. Higher-precision GPS for your tablet or mobile device

If you've tried to do airborne navigation with the typical built-in GPS on many of today's tablet computers or other smart devices, you know how frustrating that can be. Too often, these units simply aren't up to the task of providing the robust, high-precision guidance you expect from a Garmin-grade GPS navigator. That's why it makes sense to upgrade your signal with a Garmin GLO® portable receiver. This light, compact, easy-to-use portable solution is able to receive its position information from both GPS and GLONASS (Global Navigation Satellite System) constellations, adding 24 extra satellites to the mix — and assuring you of the best, most accurate positioning solutions worldwide. Your GLO® wireless sensor can lock on to satellites some 20 percent faster than most single-network receivers. And its high-capability 10 Hz receiver updates its position information up to 10 times more frequently than the garden-variety GPS sensors used in many mobile devices. GLO® works seamlessly with a variety of apps, including Garmin Pilot™, to turn your Apple iPad® or other iOS® or Android-based mobile device into a true go-anywhere moving map navigator. In fact, your GLO even comes with a six-month free trial of our Garmin Pilot app to make your choice even simpler.

Featuring easy Bluetooth® connectivity, the GLO pairs wirelessly with up to four compatible devices simultaneously. Just set GLO within range of your mobile device, and in moments you'll be receiving GLO's enhanced position data. With up to 12 hours of battery life, your GLO can go a long, long way between recharges. And even then, charging your GLO between uses is easy with the included USB cable or optional 12/24 volt cigarette lighter adapter. For optimum reception, an optional friction mount is available to keep your GLO safely positioned atop your aircraft's panel — in full view of all available satellites, both foreign and domestic. Garmin GLO: It's all about bringing you the best of both worlds in satellite-based portable navigation.



## Specifications

<b>Receiver:</b>	WAAS-enabled GPS plus GLONASS
<b>Update rate:</b>	10 Hz
<b>Accuracy:</b>	+/- 3 meters
<b>Battery life:</b>	Up to 12 hours
<b>Size:</b>	0.70"W x 1.65"H x 3.04"D
<b>Weight:</b>	2.12 oz (60.1 g)

# Keep your data current with easy updates via flyGarmin.com

Your Garmin GPS comes complete with an extensive aviation database. It's the mainstay of your unit's moving map navigation capabilities. In addition, other databases found on select Garmin portables include: Garmin FliteCharts®, SafeTaxi®, Airport Directory, plus terrain alerting, towers/obstacles databases, and much more.

Over time, as airport and airspace information changes, your databases will require updating. Fortunately, Garmin makes the process easy — just 3 simple steps to update online — via our website: flyGarmin.com.

After accessing the Garmin website, on-screen instructions will ask you to identify your GPS, select a database and region. Using the Internet connection from your home computer and a Garmin PC interface cable

accessory, you can select and update your database in just a matter of minutes. Simply follow the online prompts.

As an added incentive, Garmin's bundled pricing program for the popular GPSMAP® 696/695 and aera® series navigators offers multi-database annual updates at a cost of up to 50% less than data sets purchased individually. And you can look for even more product/database combo bundles to be added in the future. From the moving-map NavData, Obstacles and Terrain databases to graphical FlightCharts®, SafeTaxi® and AOPA Directory information, Garmin's new portable update packages make it easier and more affordable to keep all your aviation databases up-to-date. Spending less while getting more: That's what Garmin value is all about.



## Specifications

<b>Coverage:</b>	Varies by product
<b>Airports:</b>	Identifier, city/state, country, facility name, lat/long, elevation, fuel service, control, approach information
<b>VORs:</b>	Identifier, city/state, country, facility name, lat/long, frequency, co-located DME/TACAN, magnetic variation, weather broadcast
<b>NDBs:</b>	Identifier, city/state, country, facility name, lat/long, frequency, weather broadcast
<b>Intersections:</b>	Identifier, country, lat/long, nearest VOR
<b>Runways:</b>	Designation, length, width, surface, lighting, pilot-controlled lighting freq.
<b>FSS:</b>	Identifier, reference VOR, freq. usage
<b>Frequencies:</b>	Approach, arrival, control area, departure, Class B, Class C, TMA, TRSA with sector, altitude and text usage info; also, ASOS, ATIS, AWOS, center, clearance delivery, ground, pre-taxi, tower, unicom, localizer and ILS
<b>ARTCC:</b>	Identifier, freq. usage
<b>MSA:</b>	Minimum safe altitude along and in proximity to active flight plan
<b>Approaches:</b>	Non-precision and precision approaches from FAF to MAP
<b>Airspaces:</b>	Class B and C with sectors, International CTA and TMA with sectors; all special-use airspace, including MOA's, prohibited and restricted areas with controlling agency and airport