

# GARMIN CONNEXT™



**Garmin International, Inc.**  
1200 East 151st Street, Olathe, KS 66062  
p: 866.739.5687 f: 913.397.8282

Garmin (Europe) Ltd.,  
Liberty House, Hounslow Business Park,  
Southampton, Hampshire, SO40 9LR, U.K.  
p: +44 (0)87.0850.1243 f: +44 (0)23.8052.4004

Garmin Singapore Pte. Ltd.,  
46 East Coast Road #05-06, Singapore 428766  
p: 65.63480378  
f: 65.63480278  
e: avionics.asia@garmin.com

©2015 Garmin Ltd. or its subsidiaries. All rights reserved.  
Specifications and descriptions are preliminary and subject to change without notice.  
The Bluetooth work mark and logos are registered trademarks owned by Bluetooth SIG, Inc. and any use of such marks by Garmin is under license.

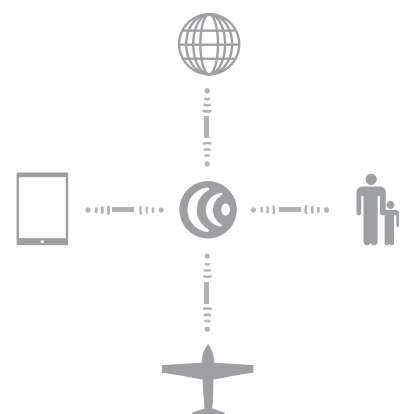
0715 M02-10243-00

## Across the **cockpit** or around the **globe**: Garmin ConnexT™ is your key to wireless access.

Today's aviation world is a far more interactive, information-driven environment than ever before. Fortunately, with the development of Garmin's satellite, network link and in-cockpit wireless connectivity systems (known collectively as Garmin ConnexT™), aircraft operators can now afford to access quality on-demand weather updates, text/voice communications, and other data sharing capabilities designed to streamline and simplify the ways they connect – both in the air and on the ground.

Using onboard link technology, Garmin ConnexT™ lets you take advantage of close-range wireless capabilities already built into many tablets and smartphones, enabling information to flow back-and-forth between those devices and your ConnexT-capable avionics in the panel. able to use your iPad® or other app-compatible device or Garmin portable product<sup>1</sup> as a true cockpit interface – capable of transferring flight plans, streaming GPS and attitude information, graphically depicting ADS-B linked traffic and weather, controlling SiriusXM™ audio entertainment channels, and much more. With Garmin ConnexT, your mobile touchscreen virtually becomes an extra digital control/display in the cockpit.

Likewise, on a vastly more far-reaching scale, Garmin ConnexT integrated satellite and ground network links can be used to provide a world of seamless connectivity solutions – everything from Iridium-based satellite weather and automatic position reporting to inflight text messaging and voice calling worldwide – with graphical interface provided on most Garmin "glass flight deck" displays and select avionics products.





## Wirelessly link your iPad® to your avionics.

You can use Garmin Connex™ – via one of our Flight Stream series of Bluetooth® gateways in your aircraft – to stream information in real time between your avionics and select Connex-capable¹ apps and Garmin portables (such as your tablet's Garmin Pilot® app – or the aera® 796/795). That means your portable device can now become a true cockpit interface – capable of transferring flight plans, streaming GPS and attitude information to reveal Garmin Pilot's 3-D synthetic vision display, graphically depicting ADS-B linked traffic and weather, controlling your SiriusXM™ system's audio entertainment channels, and much more. Additionally, if your tablet is using the ForeFlight aviation app, certain traffic, weather and other data streaming functions are also accessible for your configuration via Flight Stream, as well.

With the wireless mobility that your Flight Stream device provides (this Bluetooth® connectivity also comes built-in with our G3X™ Touch series of non-TSO'd flight displays), you'll enjoy more freedom in everything from preflight planning to in-flight decision-making. For example, instead of sitting in a too hot or too cold aircraft while you take the time to manually enter flight plan information into your avionics system, you can now use your tablet's Garmin Pilot® app to preload that data from the comfort of your own home or office. Then, once you're ready to go to the airport, Connex lets you wirelessly upload the data – waypoints, airway routings and all – from your tablet to your plane's GTN™ or GNS series navigator during preflight. It's fast. It's easy. It's seamless. And, even better, keeping flight plans in sync between your device and your avionics is a cinch: You enter the data on one device, and with a tap or two, your entries are automatically transferred to the other. So, there's no duplication of effort on your part when it comes to keeping everything in sync. Data sharing with Garmin Connex: It's all about bringing greater efficiency and work-saving convenience to your cockpit management.

	Flight Stream 110	Flight Stream 210
Rock-solid GPS	X	X
ADS-B Weather / Traffic	X	X
SiriusXM Weather	X	X
SiriusXM Audio Remote Control	X	X
Attitude Information		X
Two-way Flight Plan Transfer		X
GDL 88, GDL 69/ GDL 69A Compatible	X	X
Built-in AHRS attitude information		X
GTN series and GNS 430W/530W Compatible		X

The Garmin Flight Stream 110/210 series of Bluetooth® gateways provide wireless connectivity between your compatible tablet/mobile device and your avionics. The Flight Stream 110 is designed to be paired directly with a GDL 84 or GDL 88 ADS-B datalink or a GDL 69/GDL 69A SiriusXM™ satellite receiver – to provide the benefits of these products without the need for an installed display in the cockpit. The Flight Stream 210 adds connectivity with your GTN™ 750/650 or GNS 430/530W series navigators, enabling select Connex-capable¹ apps and Garmin portables to access graphical weather, traffic, GPS and backup attitude input, for even more situational display capability in your cockpit. (Note: Both Flight Stream 110 and 210 devices stream only the available information from your installed avionics.)

## Fly with voice communication and text messaging.



For flight crews and their passengers who want to stay in touch from the far-reaching corners of the earth, Garmin offers a full range of phone and messaging options. Your Garmin Connex™ datalink may be used to provide two-way text messaging from anywhere in the world via Short Message Service (SMS) connection with any compatible mobile phone or other e-mail messaging device<sup>3</sup>. You can send and receive text messages while airborne to maintain constant contact with clients, ground support or your team at



the home office. Likewise, two-way voice calling options, integrated with the aircraft's audio/intercom system, enable you to easily make or receive calls through your headset – or through cabin handsets – while in flight. Efficient and cost effective, Garmin datalink technology provides the messaging and voice solutions you need to do business in today's competitive global economy.



## Track planes and travelers enroute.



If you fly for a company that has people and airplanes traveling in all directions, you know how daunting it can be to manage all those complex logistics. Garmin Connex can help, with an affordable worldwide position reporting solution displayed via a website-based provider such as FlightAware.com. Enhancing mission safety and security, this system continuously monitors your aircraft's status enroute – with GPS-referenced position reports automatically relayed at predetermined intervals. Thus, "checking in with the office" becomes automatic. And by keeping your staff apprised of your flight's progress and location, the site can alert them to any unplanned variance from your travel itinerary. So, they can better coordinate schedules in real-time, and help you to make those timely connections that can yield higher productivity from your aircraft and key personnel.



## Add portable links and remote controls



In addition to using Garmin Connex™ as a wireless link to your avionics, you can also adapt it as a remote-control technology for various viewing and recording devices in your aircraft. For example, you can use your Connex-capable mobile device – or even your Garmin D2™ series pilot watch – to remotely start/stop recording, view elapsed time, and capture still shots on a Garmin VIRB® aviation action camera (or up to 10 of them), which can be mounted to record live video footage or still photography from your aircraft. Then, using Connex, you can also

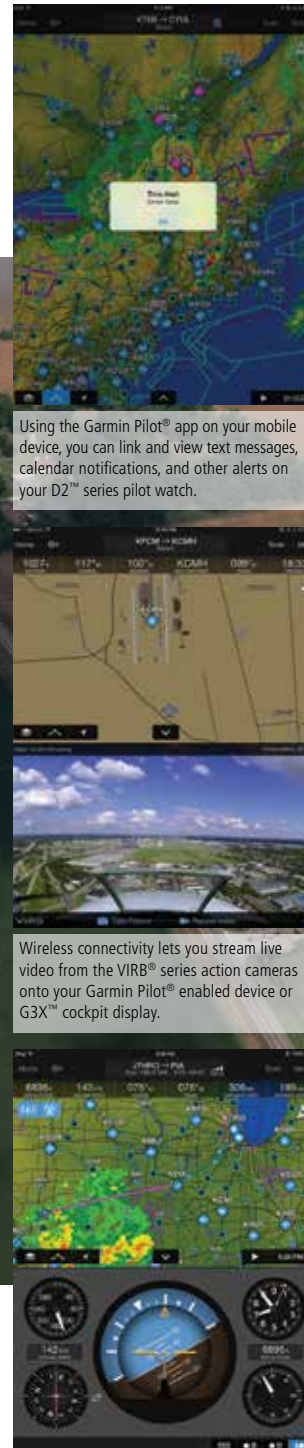


Wireless links from your Garmin Pilot™ app let you view text messages and smart notifications (altitude alerts, O2 alerts, etc.) on your D2™ series pilot watch.

VIRB™ lets you remotely start/stop recording, capture still shots, and easily change VIRB camera settings via your compatible tablet or mobile device.

Remotely control start/stop, view elapsed time, and capture still shots on the VIRB™ Elite action camera via your D2™ pilot watch.

stream and integrate live VIRB video with the Garmin Pilot® app for viewing on your iPad touchscreen. In addition, if you have SiriusXM™ satellite radio receiver in your aircraft, you can also let your passengers use Garmin Connex to turn their compatible tablets, phones or devices into wireless remotes for controlling your system's audio channels and volume settings from virtually anywhere in the cabin. Watch for more links and capabilities to emerge as new products are added to the Connex-capable ecosystem.



Using the Garmin Pilot® app on your mobile device, you can link and view text messages, calendar notifications, and other alerts on your D2™ series pilot watch.

Wireless connectivity lets you stream live video from the VIRB® series action cameras onto your Garmin Pilot® enabled device or G3X™ cockpit display.

In addition to ADS-B weather and traffic, you can view 3-D synthetic vision and backup AHRS attitude reference provided by the GDL 39 3D portable ADS-B receiver.

## Watch the weather, wherever.



Datalink weather has quickly changed the way pilots fly in North America. And now, via Garmin Connex™, those operating throughout the rest of the world can enjoy the safety-enhancing benefits of on-demand satellite weather data in the cockpit. Featured weather products include Terminal Aerodrome Forecasts, or TAFs, that show predicted weather effects at specific airfields or observation stations for up to 30 hours in advance – and METARs, or Meteorological Aviation Reports, that give current observed data for temperature, dew point, wind speed and direction, precipitation, cloud cover and heights, visibility, and barometric pressure for the location specified. A METAR report may also contain information on precipitation amounts, lightning, or other data of interest such as runway visual range (RVR) conditions. Pilot reports, or PIREPs, allow pilots to share routine or urgent weather observations with each other. These METARs, TAFs, Winds Aloft and PIREP reports can now be accessed from virtually anywhere that business aviation operates: Europe, North America, Central and South America, Australia, Africa, the Middle East, Asia and so on. All areas of the United States – including Alaska and Hawaii – are covered as well, making it possible to receive datalink weather and other services in areas where they've not previously been available via domestic satellite networks.

In addition, most of Europe, Canada, Australia and the U.S. are also provided with coverage for high-resolution graphical radar imagery, which can be viewed in full color on Garmin's compatible flight displays. Additional features and coverage areas are being added continuously<sup>2</sup>, so you'll want to check our website (Garmin.com/Connex) for the latest status updates.

To help control airtime costs, weather data from your onboard satellite datalink may be updated on an on-request basis. Or the display can be set up to refresh at preset time intervals. Various package options allow you to access weather for the specific region or regions you're interested in – so, you only pay for the weather and usage parameters you want. A network subscription through Garmin Connex is required. Bundle packages are available that provide a specified number of weather requests for a set monthly rate.



## Make the connection.

Adding global connectivity to your Garmin-equipped aircraft can open a whole new world of capability for you and your aircraft<sup>4</sup>.

And the fact that Garmin provides a single-source for your Connected Cockpit technology makes it far simpler and more fully integrated than other "pieced together" vendor solutions.

A Garmin Connex service account and your choice of voice/data/weather plans can be easily set up by calling 1.913.440.1135 worldwide, or 1.866.739.5687 in the U.S.

To find out more, contact your Garmin Authorized Dealer. Or visit our website at [Garmin.com/Connex](http://Garmin.com/Connex).

### GARMIN CONNEXT™ FEATURES AT A GLANCE:

- Affordable worldwide access to datalink weather for aviation
- Services include graphical radar imagery, METARs, TAFs and more
- Weather data and images are displayed on GTN, G500/G600 and select Garmin G1000™ series MFDs
- Improves flight planning with weather updates on a worldwide scale
- Direct on-demand updating helps control airtime costs
- Available two-way text messaging keeps you in touch from anywhere
- Send or receive text messages from air or ground
- Worldwide sat-phone service lets you make or receive calls while in-flight
- GPS-referenced position reporting capability
- Powerful onboard datalink transceiver provides satellite connectivity
- Global weather and communication tools enhance safety of flight
- Works with select Apple iPad® or other compatible iOS® or Android®-based mobile devices and select Garmin portables for connectivity in the cockpit
- Provides easy uploading of flight plan data to avionics, using an iPad® or other compatible mobile device
- Lets you stream graphical weather, traffic, GPS and attitude from your avionics, for display with your tablet's Garmin Pilot™ app

<sup>1</sup> Note: Capabilities such as position, attitude, weather and traffic are limited to the hardware installed in the aircraft. Available hardware and features continue to grow.

Reference the Flight Stream 110/210 page on [Garmin.com](http://Garmin.com) for the latest capabilities using tablets, apps and portables.

<sup>2</sup> Service levels, areas and rates are subject to change. Check [Garmin.com/Connex](http://Garmin.com/Connex) for the current service areas and rates.

<sup>3</sup> Coverage subject to network agreements with mobile service providers. All services and capabilities listed may not be available on all Garmin flight deck platforms. Visit [Garmin.com/Connex](http://Garmin.com/Connex) for details.

<sup>4</sup> Available on select systems. Visit [Garmin.com/Connex](http://Garmin.com/Connex) or see dealer for the latest updates on aircraft installations and compatibility.



connex™